

Control and signaling units Ø 22

Harmony[®] XB4 metal,

Explosive atmosphere offer

Catalog

February 2018



Schneider
Electric

Quick access to Product information

Select your Catalogue, your Training

Digi-Cat

The complete digital catalogue for industrial automation



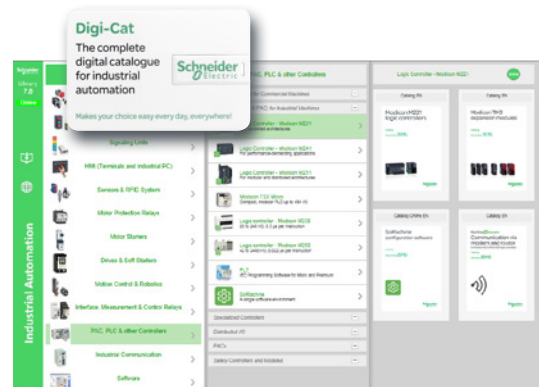
Makes your choice easy every day, everywhere!



With just 3 clicks, you can reach the 7,000 pages of the Industrial Automation & Control catalogue, in both English and French.

- Digi-Cat is available on a USB key (for PC). To get your Digi-Cat, please contact your local center
- Download Digi-Cat from this address:

<http://digi-cat.schneider-electric.com/download.html>

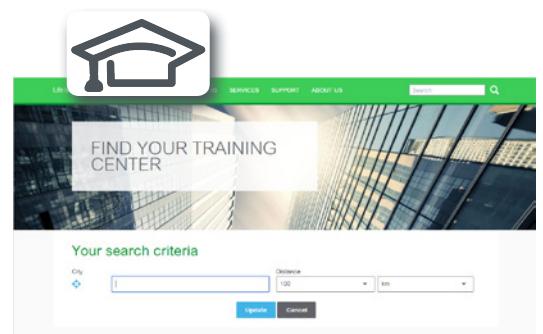
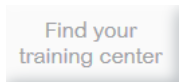


Find your training

- Find the right training for your needs
- Locate the training center with the selector tool, using this address:

<http://www.schneider-electric.com/b2b/en/services/training/technical-training.jsp>

then click on



Life Is On



General contents

Harmony® XB4 metal for explosive atmospheres

■ **Presentation** page 2

■ **References**

For ATEX dust offer

- Spring return pushbuttons, unmarked
 - Illuminated and non illuminated page 4
- Mushroom head pushbuttons, spring return page 5
- Emergency stop and Emergency switching off functions page 5
- Selector switches with standard and long handle..... page 6
- Key switches..... page 6
- Pilot lights with integral LED..... page 7

For Explosive atmosphere dust + gas offer

- Spring return pushbuttons, unmarked
 - Illuminated and non illuminated page 8
 - Mushroom head pushbuttons, spring return page 9
 - Emergency stop and Emergency switching off functions page 9
 - Selector switches with standard and long handle..... page 10
 - Key switches..... page 10
 - Pilot lights with integral LED..... page 11
 - Push-to-test pilot light page 11
 - Contact and Light blocks..... page 11
- **Product reference index**..... page 12

Control and signaling units Ø 22

Harmony XB4 metal for explosive atmospheres

Pushbuttons, switches, and pilot lights

Presentation

The Harmony® XB4 Explosive atmosphere range of modular control and signaling units are designed for industries where explosive atmospheres can be present. This range is ideal for use in environments where the generation of possible ignition sources can be prevented and controlled.

This range includes 2 offers that meet the different standards:

- ATEX dust offer: compliant with European Directive 2014/34/EU , Zone 21/22
- Explosive atmosphere dust + gas offer: IECEx Zone 1/2/21/22; UL 60079 Zone 1/ 2/21/22; NEC 500 Class 1 Div 2, Class 2 Div 2 & Class 3

This range offers products for the following functions

- ATEX dust offer: illuminated and non-illuminated pushbuttons, selector and key switches, Emergency stop functions, and pilot lights.
- Explosive atmosphere dust + gas offer: illuminated and non-illuminated pushbuttons, selector and key switches, Emergency stop functions, pilot lights, push-to-test pilot lights, contact and LED light blocks.

Explosive atmosphere and ignition sources

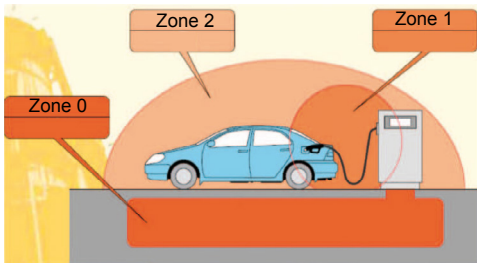
According to the directives, a potentially explosive atmosphere is the mixture of air with flammable substances in the form of gas, vapor, and/or dust, that when exposed to an ignition source under normal atmospheric conditions can completely or partially catch fire and explode.

The types of ignition sources that can create an explosive atmosphere are:

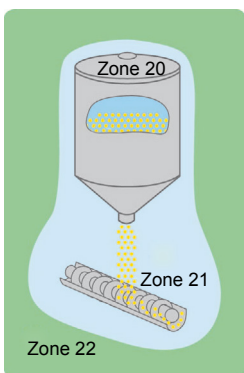
- Hot surfaces
- Flames and hot gases
- Mechanically produced sparks
- Electrical equipment
- Transient currents
- Static electricity
- Lightning strikes
- Electromagnetic waves
- Optical radiation
- Ultrasound
- Chemical reactions
- People (indirectly)

Explosive atmospheres are found in areas like:

- Metal surface grinding, especially aluminum dust and particles
- Oil refineries, rigs and processing plants
- Gas pipelines and distribution centers
- Printing industries, paper and textiles
- Aircraft refueling and hangars
- Chemical processing plants
- Grain handling and storage
- Sewage treatment plants
- Surface coating industries
- Underground coal mines
- Wood working areas
- Sugar refineries
- Vessels/ships
- Power plants



Example of hazardous gas and vapor zone



Example of hazardous dust zone

Explosive atmosphere IECEx zones and NEC 500 class and divisions

Explosive atmospheres are classified into the following categories and zones:

| Category | Level of risk | IECEx/UL | NEC 500 |
|----------|---------------|----------|-----------------------------------|
| Gas | High | Zone 0 | Class 1 div 1 |
| | Medium | Zone 1 | |
| | Low | Zone 2 | Class 1 div 2 |
| Dust | High | Zone 20 | Class 2 div 1 |
| | Medium | Zone 21 | |
| | Low | Zone 22 | Class 2 div 2 Class 3 (fibers) |

Control and signaling units Ø 22

Harmony XB4 metal for explosive atmospheres

Pushbuttons, switches, and pilot lights

Presentation (continued)

Explosive atmosphere certification

Equipment made for use in potentially hazardous areas is obliged to follow a dedicated procedure for testing & inspection. Following the results of this procedure, the XB4 explosive atmosphere range obtained the following certificates:

- ATEX dust offer
 - ATEX certificate: 04ATEX9004U
- Explosive atmosphere dust + gas offer
 - ATEX certificate: 04ATEX9004U
 - IECEx certificate: IECEx INE 18.0003U
 - cULus Industrial control equipment for use in Hazardous Locations: E497361
 - cULus Emergency stop devices for use in Hazardous Locations: E497838

Marking example for XB4●●●GEX

| | | |
|--|--------------------------|---------------------------------|
| | Ex | Explosion protection |
| | db eb mb tb | Type of protection |
| | IIC | Gas group |
| | IIIC | Dust type |
| | Gb Db | Equipment protection level |
| | ⚡ | Explosion protection mark |
| | GD | Environment (D: Dust/G: Gas) |
| | II 2 | Equipment group and category |
| | 0080 | INERIS Affiliation number |
| | IECEX INE 17----U | IECEX Certificate number |

Applications

- Industrial applications
 - Food & Beverage
 - Oil & Gas, including petrochemical extraction & transformation, car gas stations and gas bottling plants
 - Chemicals
 - Printing
 - Paint manufacturing lines



Food & Beverage



Oil & Gas



Printing



Paint manufacturing

For more technical information, please refer to the Harmony XB4 Explosive atmosphere products page on the Schneider Electric website.


Control and signaling units Ø 22

Harmony XB4 metal, explosive atmosphere

ATEX dust offer

Spring return pushbuttons, unmarked

Pushbuttons with silicon booted head for severe environments (1) Screw clamp terminal connections (Schneider Electric anti-loosening system)


| Shape of head | Type of push | Zone | | Type of contact | | Color of push | Reference | Weight kg/lb |
|---|---|-------|-------------------|-----------------|----|---------------|-------------------|--------------|
| | | Dust | Gas | NO | NC | | | |
|  | Booted, clear silicon For insertion of legends (color of push unobscured) | 21-22 | - | 1 | - | White | XB4BP181EX | 0.082/0.181 |
| | | | | 1 | - | Green | XB4BP381EX | 0.082/0.181 |
| | | | | - | 1 | Red | XB4BP482EX | 0.082/0.181 |
| | | | | 1 | - | Yellow | XB4BP581EX | 0.082/0.181 |
| | | | | 1 | - | Blue | XB4BP681EX | 0.082/0.181 |
| | Booted, clear silicon (color of push unobscured) | 21-22 | - | 1 | - | Black | XB4BP21EX | 0.082/0.181 |
| | | | | 1 | - | Green | XB4BP31EX | 0.082/0.181 |
| | | | | - | 1 | Red | XB4BP42EX | 0.082/0.181 |
| | | | | 1 | - | Yellow | XB4BP51EX | 0.082/0.181 |
| | | | | 1 | - | Blue | XB4BP61EX | 0.082/0.181 |
| | Booted, colored silicon | 21-22 | - | 1 | - | White | XB4BPS11EX | 0.082/0.181 |
| | | | | 1 | - | Black | XB4BPS21EX | 0.082/0.181 |
| | | | | 1 | - | Green | XB4BPS31EX | 0.082/0.181 |
| | | | | - | 1 | Red | XB4BPS42EX | 0.082/0.181 |
| | | | | 1 | - | Yellow | XB4BPS51EX | 0.082/0.181 |
| 1 | - | Blue | XB4BPS61EX | 0.082/0.181 | | | | |

PF152007B



XB4BP482EX

Illuminated pushbuttons with silicon booted head for severe environments (1) Screw clamp terminal connections (Schneider Electric anti-loosening system)

| Shape of head | Type of push | Zone | | Type of contact | | Supply voltage V | Color of push | Reference | Weight kg/lb |
|---|---|-------|------------------------|----------------------|---------------------|------------------------|-------------------|----------------------|----------------------|
| | | Dust | Gas | NO | NC | | | | |
|  | Booted, clear silicon (color of push unobscured) | 21-22 | - | 1 | - | 24 ~ 50/60 Hz | White | XB4BP183B5EX | 0.102/0.225 |
| | | | | 1 | - | | Green | XB4BP383B5EX | 0.102/0.225 |
| | | | | - | 1 | | Red | XB4BP483B5EX | 0.102/0.225 |
| | | | | 1 | - | | Yellow | XB4BP583B5EX | 0.102/0.225 |
| | | | | 1 | - | | Blue | XB4BP683B5EX | 0.102/0.225 |
| | | | | 1 | - | | 240 ~ 50/60 Hz | White | XB4BP183M5EX |
| | | | | 1 | - | Green | | XB4BP383M5EX | 0.102/0.225 |
| | | | | - | 1 | Red | | XB4BP483M5EX | 0.102/0.225 |
| | | | | 1 | - | Yellow | | XB4BP583M5EX | 0.102/0.225 |
| | | | | 1 | - | Blue | | XB4BP683M5EX | 0.102/0.225 |
| | | | | 1 | - | 24...120 ~ 50/60 Hz | | White | XB4BP183BG5EX |
| | | | | 1 | - | | Green | XB4BP383BG5EX | 0.102/0.225 |
| | - | 1 | Red | XB4BP483BG5EX | 0.102/0.225 | | | | |
| | 1 | - | Yellow | XB4BP583BG5EX | 0.102/0.225 | | | | |
| | 1 | - | Blue | XB4BP683BG5EX | 0.102/0.225 | | | | |
| | 1 | - | 48...120 ~ 50/60 Hz | White | XB4BP183G5EX | | 0.102/0.225 | | |
| | 1 | - | | Green | XB4BP383G5EX | 0.102/0.225 | | | |
| | - | 1 | | Red | XB4BP483G5EX | 0.102/0.225 | | | |
| | 1 | - | | Yellow | XB4BP583G5EX | 0.102/0.225 | | | |
| | 1 | - | | Blue | XB4BP683G5EX | 0.102/0.225 | | | |

XB4EX_1039_CP0DA2076003



XB4BP383B5EX

(1) For additional contacts, please use standard Harmony XB4 range contact blocks ZBE101(1 NO) and ZBE102 (1 NC)

Control and signaling units Ø 22

Harmony XB4 metal, explosive atmosphere

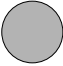
ATEX dust offer

Mushroom head pushbuttons, spring return

Emergency stop and Emergency switching off functions

Mushroom head pushbuttons (1)

Screw clamp terminal connections (Schneider Electric anti-loosening system)

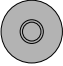


| Shape of head | Type of reset | Zone | | Type of contact | | Push | | Reference | Weight kg/lb |
|---|---------------|-------|-----|-----------------|----|------------|--------|------------------|--------------|
| | | Dust | Gas | NO | NC | Ø (mm)/in. | Color | | |
|  | Mushroom head | 21-22 | - | 1 | - | 40/1.575 | Black | XB4BC21EX | 0.122/0.269 |
| | | | | 1 | - | | Green | XB4BC31EX | 0.122/0.269 |
| | | | | - | 1 | | Red | XB4BC42EX | 0.122/0.269 |
| | | | | 1 | - | | Yellow | XB4BC51EX | 0.122/0.269 |
| | | | | 1 | - | | Blue | XB4BC61EX | 0.122/0.269 |



XB4BC21EX

Emergency stop and switching off pushbuttons with trigger action and mechanical latching (1)

Screw clamp terminal connections (Schneider Electric anti-loosening system)

| Shape of head | Type of reset | Zone | | Type of contact | | Push | | Reference | Weight kg/lb |
|---|---------------------------|-------|-----|-----------------|----|------------|-------|--------------------|--------------|
| | | Dust | Gas | NO | NC | Ø (mm)/in. | Color | | |
|  | Push-pull | 21-22 | - | 1 | 1 | 40/1.575 | Red | XB4BT845EX | 0.125/0.276 |
|  | Turn to release | 21-22 | - | 1 | 1 | | | XB4BS8445EX | 0.118/0.260 |
|  | Key release (key no. 455) | 21-22 | - | 1 | 1 | | | XB4BS9445EX | 0.133/0.293 |



XB4BS9445EX

(1) For additional contacts, please use standard Harmony XB4 range contact blocks ZBE101(1 NO) and ZBE102 (1 NC)

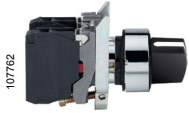
Control and signaling units Ø 22

Harmony XB4 metal, explosive atmosphere

ATEX dust offer

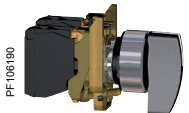
Selector switches with standard and long handle

Key switches



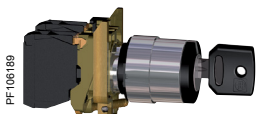
107762
XB4BD33EX

| Selector switches with standard handle (1) | | | | | | | | | | |
|---|------------------------|-------|-----|-----------------|----|------------------|-------------------------|-----------|------------------|-------------|
| Screw clamp terminal connections (Schneider Electric anti-loosening system) | | | | | | | | | | |
| Shape of head | Type of operator | Zone | | Type of contact | | Positions | | Reference | Weight kg/lb | |
| | | Dust | Gas | NO | NC | Number | Type | | | |
| | Standard handle, Black | 21-22 | - | 1 | 1 | 2-position 90° | Stay put | | XB4BD25EX | 0.102/0.225 |
| | | | | 2 | - | 3-position ± 45° | Stay put | | XB4BD33EX | 0.102/0.225 |
| | | | | | | | Spring return to center | | XB4BD53EX | 0.102/0.225 |



PF-106190
XB4BJ33EX

| Selector switches with long handle (1) | | | | | | | | | | |
|---|--------------------|-------|-----|-----------------|----|------------------|-------------------------|-----------|------------------|-------------|
| Screw clamp terminal connections (Schneider Electric anti-loosening system) | | | | | | | | | | |
| Shape of head | Type of operator | Zone | | Type of contact | | Positions | | Reference | Weight kg/lb | |
| | | Dust | Gas | NO | NC | Number | Type | | | |
| | Long handle, Black | 21-22 | - | 1 | - | 2-position 90° | Stay put | | XB4BJ21EX | 0.096/0.212 |
| | | | | 2 | - | 3-position ± 45° | Stay put | | XB4BJ33EX | 0.107/0.236 |
| | | | | | | | Spring return to center | | XB4BJ53EX | 0.107/0.236 |



PF-106189
XB4BG33EX

| Key switches (1) | | | | | | | | | | | |
|---|-----------------------------|-------------|-----|-----------------|----|----------------|----------|-----------------------|------------------|------------------|------------------|
| Screw clamp terminal connections (Schneider Electric anti-loosening system) | | | | | | | | | | | |
| Shape of head | Type of operator | Zone | | Type of contact | | Positions | | Reference | Weight kg/lb | | |
| | | Dust | Gas | NO | NC | Number | Type | | | | |
| | Key switch with key no. 455 | 21-22 | - | 1 | - | 2-position 90° | Stay put | | XB4BG21EX | 0.153/0.337 | |
| | | | | | | | | | XB4BG41EX | 0.153/0.337 | |
| | | | | | | | | Spring return to left | | XB4BG61EX | 0.153/0.337 |
| | | | | | | | | 3-position ± 45° | Stay put | | XB4BG03EX |
| | XB4BG33EX | 0.164/0.362 | | | | | | | | | |

(1) For additional contacts, please use standard Harmony XB4 range contact blocks ZBE101(1 NO) and ZBE102 (1 NC)

Control and signaling units Ø 22

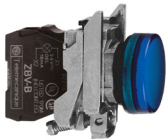
Harmony XB4 metal, explosive atmosphere

ATEX dust offer

Pilot lights with integral LED

Pilot lights with integral LED (with plain lens) (1)

Screw clamp terminal connections (Schneider Electric anti-loosening system)

| Shape of head | Supply voltage V | Zone | | Color | Reference | Weight kg/lb |
|--|---------------------------|-------|-----|------------------|-------------------|--------------|
| | | Dust | Gas | | | |
|  110022 XB4BVB6EX | 24 ~ (50/60 Hz) | 21-22 | - | White | XB4BVB1EX | 0.080/0.176 |
| | | | | Green | XB4BVB3EX | 0.080/0.176 |
| | | | | Red | XB4BVB4EX | 0.080/0.176 |
| | | | | Orange | XB4BVB5EX | 0.080/0.176 |
| | | | | Blue | XB4BVB6EX | 0.080/0.176 |
| | | | | White | XB4BVBG1EX | 0.080/0.176 |
| | 24...120 ~ (50/60 Hz) | 21-22 | - | Green | XB4BVBG3EX | 0.080/0.176 |
| | | | | Red | XB4BVBG4EX | 0.080/0.176 |
| | | | | Orange | XB4BVBG5EX | 0.080/0.176 |
| | | | | Blue | XB4BVBG6EX | 0.080/0.176 |
| | | | | White | XB4BVG1EX | 0.080/0.176 |
| | 110...120 ~ (50/60 Hz) | 21-22 | - | Green | XB4BVG3EX | 0.080/0.176 |
| | | | | Red | XB4BVG4EX | 0.080/0.176 |
| | | | | Orange | XB4BVG5EX | 0.080/0.176 |
| | | | | Blue | XB4BVG6EX | 0.080/0.176 |
| | | | | White | XB4BVM1EX | 0.080/0.176 |
| | 230...240 ~ (50/60 Hz) | 21-22 | - | Green | XB4BVM3EX | 0.080/0.176 |
| | | | | Red | XB4BVM4EX | 0.080/0.176 |
| Orange | | | | XB4BVM5EX | 0.080/0.176 | |
| Blue | | | | XB4BVM6EX | 0.080/0.176 | |

(1) For additional contacts, please use standard Harmony XB4 range contact blocks ZBE101(1 NO) and ZBE102 (1 NC)

Control and signaling units Ø 22

Harmony XB4 metal, explosive atmosphere

Explosive atmosphere dust + gas offer

Spring return pushbuttons, unmarked

XB4EX_1038_CPSC1T7017



XB4BP482GEX

| Pushbuttons with silicon booted head for severe environments | | | | | | | | |
|---|---|-------|-----|-----------------|----|---------------|-------------|--------------|
| Screw clamp terminal connections (Schneider Electric anti-loosening system) | | | | | | | | |
| Shape of head | Type of push | Zone | | Type of contact | | Color of push | Reference | Weight kg/lb |
| | | Dust | Gas | NO | NC | | | |
| | Booted, clear silicon For insertion of legends (color of push unobscured) | 21-22 | 1-2 | 1 | – | White | XB4BP181GEX | 0.089/0.196 |
| | | | | 1 | – | Green | XB4BP381GEX | 0.089/0.196 |
| | | | | – | 1 | Red | XB4BP482GEX | 0.109/0.240 |
| | | | | 1 | – | Yellow | XB4BP581GEX | 0.109/0.240 |
| | | | | 1 | – | Blue | XB4BP681GEX | 0.109/0.240 |
| | Booted, clear silicon (color of push unobscured) | 21-22 | 1-2 | 1 | – | Black | XB4BP21GEX | 0.089/0.196 |
| | | | | 1 | – | Green | XB4BP31GEX | 0.089/0.196 |
| | | | | – | 1 | Red | XB4BP42GEX | 0.109/0.240 |
| | | | | 1 | – | Yellow | XB4BP51GEX | 0.109/0.240 |
| | | | | 1 | – | Blue | XB4BP61GEX | 0.109/0.240 |
| | Booted, colored silicon | 21-22 | 1-2 | 1 | – | White | XB4BPS11GEX | 0.080/0.176 |
| | | | | 1 | – | Black | XB4BPS21GEX | 0.080/0.176 |
| | | | | 1 | – | Green | XB4BPS31GEX | 0.080/0.176 |
| | | | | – | 1 | Red | XB4BPS42GEX | 0.081/0.179 |
| | | | | 1 | – | Yellow | XB4BPS51GEX | 0.080/0.176 |
| | | | | 1 | – | Blue | XB4BPS61GEX | 0.080/0.176 |

XB4EX_1038_CPSC1T7023



XB4BP583BM5GEX

| Illuminated pushbuttons with silicon booted head for severe environments | | | | | | | | | |
|---|---|--------|-----|-----------------|----|------------------------|---------------|----------------|--------------|
| Screw clamp terminal connections (Schneider Electric anti-loosening system) | | | | | | | | | |
| Shape of head | Type of push | Zone D | | Type of contact | | Supply voltage V | Color of push | Reference | Weight kg/lb |
| | | Dust | Gas | NO | NC | | | | |
| | Booted, clear silicon For insertion of legends (color of push unobscured) | 21-22 | 1-2 | 2 | – | 24...254 ~ 50/60 Hz | White | XB4BP183BM5GEX | 0.127/0.280 |
| | | | | 2 | – | | Green | XB4BP383BM5GEX | 0.127/0.280 |
| | | | | 2 | – | | Red | XB4BP483BM5GEX | 0.127/0.280 |
| | | | | 2 | – | | Yellow | XB4BP583BM5GEX | 0.127/0.280 |
| | | | | 2 | – | | Blue | XB4BP683BM5GEX | 0.127/0.280 |

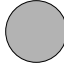
Control and signaling units Ø 22

Harmony XB4 metal, explosive atmosphere

Explosive atmosphere dust + gas offer

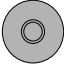

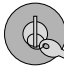
Mushroom head pushbuttons, spring return

Emergency stop and Emergency switching off functions

| Mushroom head pushbuttons | | | | | | | | | | | |
|---|---------------|--------|-----|-----------------|----|------------|--------|-------------------|--------------|-------------------|-------------|
| Screw clamp terminal connections (Schneider Electric anti-loosening system) | | | | | | | | | | | |
| Shape of head | Type of reset | Zone D | | Type of contact | | Push | | Reference | Weight kg/lb | | |
| | | Dust | Gas | NO | NC | Ø (mm)/in. | Color | | | | |
|  | Mushroom head | 21-22 | 1-2 | 1 | - | 40/1.575 | Black | XB4BC21GEX | 0.126/0.278 | | |
| | | | | 1 | - | | Green | | | XB4BC31GEX | 0.126/0.278 |
| | | | | - | 1 | | Red | | | XB4BC42GEX | 0.127/0.280 |
| | | | | 1 | - | | Yellow | | | XB4BC51GEX | 0.126/0.278 |
| | | | | 1 | - | | Blue | | | XB4BC61GEX | 0.126/0.278 |



XB4BC21GEX

| Emergency stop and switching off pushbuttons with trigger action and mechanical latching | | | | | | | | | |
|--|-------------------------------|--------|-----|-----------------|----|------------|-------|---------------------|--------------|
| Screw clamp terminal connections (Schneider Electric anti-loosening system) | | | | | | | | | |
| Shape of head | Type of reset | Zone D | | Type of contact | | Push | | Reference | Weight kg/lb |
| | | Dust | Gas | NO | NC | Ø (mm)/in. | Color | | |
|  | Push-pull | 21-22 | 1-2 | 1 | 1 | 40/1.575 | Red | XB4BT845GEX | 0.142/0.313 |
|  | Turn to release | 21-22 | 1-2 | 1 | 1 | | | XB4BS8445GEX | 0.141/0.311 |
|  | Key release (key no. 455) (3) | 21-22 | 1-2 | 1 | 1 | | | XB4BS9445GEX | 0.168/0.370 |



XB4BS9445GEX

Control and signaling units Ø 22

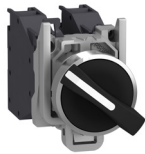
Harmony XB4 metal, explosive atmosphere

Explosive atmosphere dust + gas offer

Selector switches with standard and long handle

Key switches

XB4EX_1038_CFSCT17008



XB4BD33GEX

| Selector switches with standard handle | | | | | | | | | | |
|---|------------------------|-------|-----|-----------------|----|------------------|--------------|-----------|--------------|-------------|
| Screw clamp terminal connections (Schneider Electric anti-loosening system) | | | | | | | | | | |
| Shape of head | Type of operator | Zone | | Type of contact | | Positions | | Reference | Weight kg/lb | |
| | | Dust | Gas | NO | NC | Number | Type | | | |
| | Standard handle, Black | 21-22 | 1-2 | 1 | 1 | 2-position | Stay put 90° | ✓ | XB4BD25GEX | 0.115/0.254 |
| | | | | 2 | – | 3-position ± 45° | Stay put | | | |
| | | | | | | | | | | |

XB4EX_1038_CFSCT17013



XB4BJ33GEX

| Selector switches with long handle | | | | | | | | | | |
|---|--------------------|-------|-----|-----------------|----|------------------|--------------|-----------|--------------|-------------|
| Screw clamp terminal connections (Schneider Electric anti-loosening system) | | | | | | | | | | |
| Shape of head | Type of operator | Zone | | Type of contact | | Positions | | Reference | Weight kg/lb | |
| | | Dust | Gas | NO | NC | Number | Type | | | |
| | Long handle, Black | 21-22 | 1-2 | 1 | – | 2-position | Stay put 90° | ✓ | XB4BJ21GEX | 0.101/0.223 |
| | | | | 2 | – | 3-position ± 45° | Stay put | | | |
| | | | | | | | | | | |

XB4EX_1038_CFSCT17011



XB4BG33GEX

| Key switches | | | | | | | | | | | | | | |
|---|-----------------------------|-------|-----|-----------------|-------------|------------|--------------|-----------|--------------|------------------|-----------------------|---|------------|-------------|
| Screw clamp terminal connections (Schneider Electric anti-loosening system) | | | | | | | | | | | | | | |
| Shape of head | Type of operator | Zone | | Type of contact | | Positions | | Reference | Weight kg/lb | | | | | |
| | | Dust | Gas | NO | NC | Number | Type | | | | | | | |
| | Key switch with key no. 455 | 21-22 | 1-2 | 1 | – | 2-position | Stay put 90° | ✓ | XB4BG21GEX | 0.159/0.351 | | | | |
| | | | | | | | | | XB4BG41GEX | 0.158/0.348 | | | | |
| | | | | | | | | | | | Spring return to left | ↔ | XB4BG61GEX | 0.160/0.353 |
| | | | | | | | | 2 | – | 3-position ± 45° | Stay put | ↕ | XB4BG03GEX | 0.176/0.388 |
| | | | | XB4BG33GEX | 0.177/0.390 | | | | | | | | | |

Control and signaling units Ø 22

Harmony XB4 metal, explosive atmosphere

Explosive atmosphere dust + gas offer

Pilot lights with integral LED, Push-to-test pilot light

Contact and Light blocks

Pilot lights with integral LED (with plain lens)

Screw clamp terminal connections (Schneider Electric anti-loosening system)



| Shape of head | Supply voltage V | Zone | | Color | Reference | Weight kg/lb |
|----------------------|--------------------------|-------|-----|--------|------------|-----------------|
| | | Dust | Gas | | | |
| Protected LED | 24...240 ~ (50/60 Hz) | 21-22 | 1-2 | White | XB4BVB1GEX | 0.083/0.183 |
| | | | | Green | XB4BVB3GEX | 0.083/0.183 |
| | | | | Red | XB4BVB4GEX | 0.083/0.183 |
| | | | | Orange | XB4BVB5GEX | 0.083/0.183 |
| | | | | Blue | XB4BVB6GEX | 0.083/0.183 |

Push-to-test pilot light (with plain lens)



| Shape of head | Supply voltage V | Zone | | Color | Reference | Weight kg/lb |
|----------------------|--------------------------|-------|-----|--------|---------------|-----------------|
| | | Dust | Gas | | | |
| Protected LED | 24...254 ~ (50/60 Hz) | 21-22 | 1-2 | White | XB4BW21BM5GEX | 0.117/0.258 |
| | | | | Green | XB4BW23BM5GEX | 0.117/0.258 |
| | | | | Red | XB4BW24BM5GEX | 0.117/0.258 |
| | | | | Orange | XB4BW25BM5GEX | 0.117/0.258 |
| | | | | Blue | XB4BW26BM5GEX | 0.117/0.258 |

Contact blocks (1)

Screw clamp terminal connections (Schneider Electric anti-loosening system)



| Description | Type of contact | Zone | | Type of contact | | Sold in lots of | Reference | Weight kg/lb |
|-----------------------|-----------------|-------|-----|-----------------|---|-----------------|-----------|-----------------|
| | | Dust | Gas | | | | | |
| Contact blocks Single | Single | 21-22 | 1-2 | 1 | - | 1 | ZBE101GEX | 0.018/0.040 |
| | | | | - | 1 | 1 | ZBE102GEX | 0.019/0.042 |

Light blocks (1)

Screw clamp terminal connections (Schneider Electric anti-loosening system)



| Light source | Supply voltage V | Zone | | Color of light source | Sold in lots of | Reference | Weight kg/lb |
|--------------|--------------------------|-------|-----|-----------------------|-----------------|-----------|-----------------|
| | | Dust | Gas | | | | |
| Integral LED | 24...254 ~ (50/60 Hz) | 21-22 | 1-2 | White | 1 | ZBVB1GEX | 0.020/0.044 |
| | | | | Green | 1 | ZBVB3GEX | 0.020/0.044 |

(1) To be used only with explosive atmosphere dust + gas offer products

| X | | Z | | | |
|----------------|----|----------------|----|-----------|----|
| XB4BC21EX | 5 | XB4BP483M5EX | 4 | ZBE101GEX | 11 |
| XB4BC21GEX | 9 | XB4BP581EX | 4 | ZBE102GEX | 11 |
| XB4BC31EX | 5 | XB4BP581GEX | 8 | ZBVBM1GEX | 11 |
| XB4BC31GEX | 9 | XB4BP583B5EX | 4 | ZBVBM3GEX | 11 |
| XB4BC42EX | 5 | XB4BP583BG5EX | 4 | | |
| XB4BC42GEX | 9 | XB4BP583BM5GEX | 8 | | |
| XB4BC51EX | 5 | XB4BP583G5EX | 4 | | |
| XB4BC51GEX | 9 | XB4BP583M5EX | 4 | | |
| XB4BC61EX | 5 | XB4BP681EX | 4 | | |
| XB4BC61GEX | 9 | XB4BP681GEX | 8 | | |
| XB4BD25EX | 6 | XB4BP683B5EX | 4 | | |
| XB4BD25GEX | 10 | XB4BP683BG5EX | 4 | | |
| XB4BD33EX | 6 | XB4BP683BM5GEX | 8 | | |
| XB4BD33GEX | 10 | XB4BP683G5EX | 4 | | |
| XB4BD53EX | 6 | XB4BP683M5EX | 4 | | |
| XB4BD53GEX | 10 | XB4BPS11EX | 4 | | |
| XB4BG03EX | 6 | XB4BPS11GEX | 8 | | |
| XB4BG03GEX | 10 | XB4BPS21EX | 4 | | |
| XB4BG21EX | 6 | XB4BPS21GEX | 8 | | |
| XB4BG21GEX | 10 | XB4BPS31EX | 4 | | |
| XB4BG33EX | 6 | XB4BPS31GEX | 8 | | |
| XB4BG33GEX | 10 | XB4BPS42EX | 4 | | |
| XB4BG41EX | 6 | XB4BPS42GEX | 8 | | |
| XB4BG41GEX | 10 | XB4BPS51EX | 4 | | |
| XB4BG61EX | 6 | XB4BPS51GEX | 8 | | |
| XB4BG61GEX | 10 | XB4BPS61EX | 4 | | |
| XB4BJ21EX | 6 | XB4BPS61GEX | 8 | | |
| XB4BJ21GEX | 10 | XB4BS8445EX | 5 | | |
| XB4BJ33EX | 6 | XB4BS8445GEX | 9 | | |
| XB4BJ33GEX | 10 | XB4BS9445EX | 5 | | |
| XB4BJ53EX | 6 | XB4BS9445GEX | 9 | | |
| XB4BJ53GEX | 10 | XB4BT845EX | 5 | | |
| XB4BP21EX | 4 | XB4BT845GEX | 9 | | |
| XB4BP21GEX | 8 | XB4BVB1EX | 7 | | |
| XB4BP31EX | 4 | XB4BVB3EX | 7 | | |
| XB4BP31GEX | 8 | XB4BVB4EX | 7 | | |
| XB4BP42EX | 4 | XB4BVB5EX | 7 | | |
| XB4BP42GEX | 8 | XB4BVB6EX | 7 | | |
| XB4BP51EX | 4 | XB4BVBG1EX | 7 | | |
| XB4BP51GEX | 8 | XB4BVBG3EX | 7 | | |
| XB4BP61EX | 4 | XB4BVBG4EX | 7 | | |
| XB4BP61GEX | 8 | XB4BVBG5EX | 7 | | |
| XB4BP181EX | 4 | XB4BVBG6EX | 7 | | |
| XB4BP181GEX | 8 | XB4BVBM1GEX | 11 | | |
| XB4BP183B5EX | 4 | XB4BVBM3GEX | 11 | | |
| XB4BP183BG5EX | 4 | XB4BVBM4GEX | 11 | | |
| XB4BP183BM5GEX | 8 | XB4BVBM5GEX | 11 | | |
| XB4BP183G5EX | 4 | XB4BVBM6GEX | 11 | | |
| XB4BP183M5EX | 4 | XB4BVG1EX | 7 | | |
| XB4BP381EX | 4 | XB4BVG3EX | 7 | | |
| XB4BP381GEX | 8 | XB4BVG4EX | 7 | | |
| XB4BP383B5EX | 4 | XB4BVG5EX | 7 | | |
| XB4BP383BG5EX | 4 | XB4BVG6EX | 7 | | |
| XB4BP383BM5GEX | 8 | XB4BVM1EX | 7 | | |
| XB4BP383G5EX | 4 | XB4BVM3EX | 7 | | |
| XB4BP383M5EX | 4 | XB4BVM4EX | 7 | | |
| XB4BP482EX | 4 | XB4BVM5EX | 7 | | |
| XB4BP482GEX | 8 | XB4BVM6EX | 7 | | |
| XB4BP483B5EX | 4 | XB4BW21BM5GEX | 11 | | |
| XB4BP483BG5EX | 4 | XB4BW23BM5GEX | 11 | | |
| XB4BP483BM5GEX | 8 | XB4BW24BM5GEX | 11 | | |
| XB4BP483G5EX | 4 | XB4BW25BM5GEX | 11 | | |
| | | XB4BW26BM5GEX | 11 | | |