

Limit switches

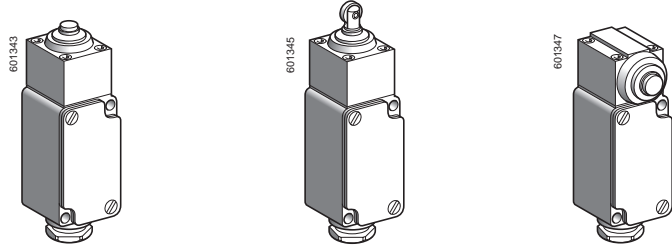
OsiSense XC Special

For very severe applications, type XC2J

1

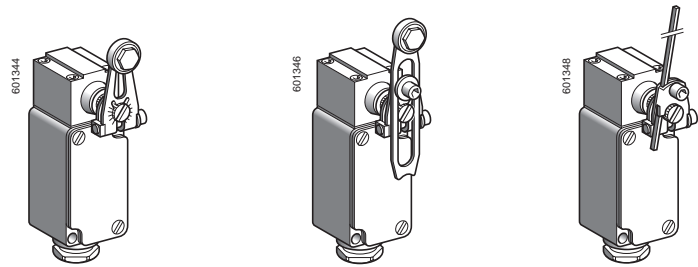
■ XC2J
with 1 cable entry

□ With head for linear movement (plunger)



Page 1/152

□ With head for rotary movement (lever)



Page 1/152

Limit switches

OsiSense XC Special

For very severe applications, type XC2J

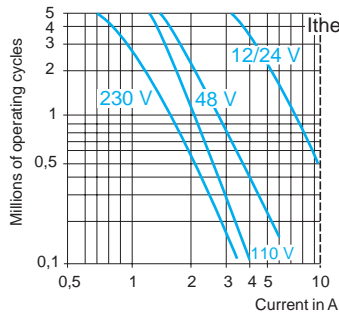
Environment characteristics

Conformity to standards	Products	IEC/EN 60947-5-1, IEC 60337-1, VDE 0660-200, UL 508, CSA C22-2 n° 14
	Machine assemblies	IEC/EN 60204-1, NF C 79-130
Product certifications	Standard version	CSA 300 V $\overline{\text{---}}$ HD, 60 W \sim
	Special version	UL 250 V \sim HD Listed, CSA 300 V \sim HD, 60 W with 1/2" NPT tapped cable entry
Protective treatment	Standard version	"TC"
Ambient air temperature	For operation	- 25...+ 70°C. Special adaptable sub-assemblies: - 40°C or + 120°C
	For storage	- 40...+ 70°C
Vibration resistance		10 gn (10...500 Hz) conforming to IEC 60068-2-6
Shock resistance		25 gn (18 ms) conforming to IEC 60068-2-27
Electric shock protection		Class I conforming to IEC 60536 and NF C 20-030
Degree of protection		IP 65 conforming to IEC 60529, IP 657 conforming to NF C 20-010
Repeat accuracy		0.01 mm on the tripping points, with 1 million operating cycles for head with end plunger
Cable entry		1 entry incorporating cable gland. Clamping capacity: 6...13.5 mm

Contact block characteristics

Rated operational characteristics		\sim AC-15; A300 ($U_e = 240$ V, $I_e = 3$ A) $\overline{\text{---}}$ DC-13; Q300 ($U_e = 250$ V, $I_e = 0.27$ A), conforming to IEC 60947-5-1 Appendix A, EN 60947-5-1
Rated insulation voltage		500 V conforming to IEC 60947-5-1, group C conforming to NF C 20-040, 300 V conforming to CSA C22-2 n° 14
Resistance across terminals		≤ 25 m Ω conforming to NF C 93-050 method A or IEC 60255-7 category 3
Short-circuit protection		10 A cartridge fuse type gG (gl)
Connection	Screw clamp terminals	XCKZ01 : clamping capacity, min: 1 x 0.5 mm ² , max: 2 x 2.5 mm ² XESP10e1 : clamping capacity, min: 1 x 0.75 mm ² , max: 2 x 1.5 mm ²
Minimum actuation speed		0.001 m/minute
Electrical durability		<ul style="list-style-type: none"> ■ Conforming to IEC 60947-5-1 Appendix C ■ Utilisation categories AC-15 and DC-13 ■ Maximum operating rate: 3600 operating cycles/hour ■ Load factor: 0.5

AC supply
50/60 Hz \sim
 inductive circuit

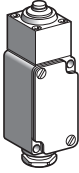
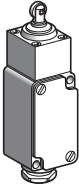
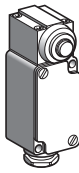
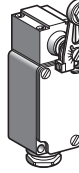

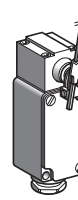


DC supply $\overline{\text{---}}$	Voltage V	24	48	120
	Power broken in W for 5 million operating cycles 	10	7	4

Limit switches

OsiSense XC Special

For very severe applications, type XC2J
Complete switches, fixed body,
1 cable entry incorporating cable gland



Type of head	Plunger			Rotary		
						
Type of operator	Metal end plunger	Steel roller plunger	Metal side plunger	Thermoplastic roller lever (1)	Variable length thermoplastic roller lever (1)	Steel rod lever Ø 3 mm (1)

(1) Adjustable throughout 360°.

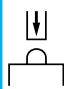
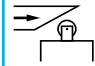

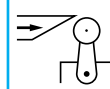
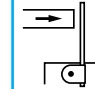
References

Single-pole CO
snap action XCKZ01



	Actuation from left AND right			Actuation from left OR right		
	ZC2JC1 + ZC2JE61	ZC2JC1 + ZC2JE62	ZC2JC1 + ZC2JE63	ZC2JC1 + ZC2JE01 + ZC2JY11	ZC2JC1 + ZC2JE01 + ZC2JY31	ZC2JC1 + ZC2JE01 + ZC2JY51
Weight (kg)	0.555	0.560	0.600	0.605	0.620	0.605
Contact operation	 closed  open			(A) = cam displacement		

Complementary characteristics not shown under general characteristics (page 1/151)

Switch actuation	On end	By 30° cam	On end	By 30° cam	By any moving part
Type of actuation					
Maximum actuation speed	0.5 m/s		1.5 m/s		
Mechanical durability (in millions of operating cycles)	30	25	30		
Minimum tripping force or torque	18 N		26 N	With head ZC2JE01: 0.30 N.m With head ZC2JE05: 0.20 N.m	
Cable entry	1 tapped entry incorporating metal cable gland. Clamping capacity 6 to 13.5 mm				

Other versions

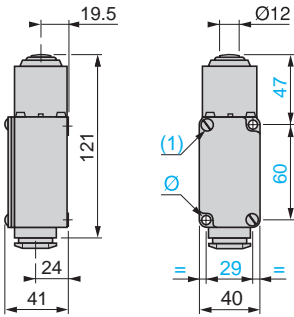
Switches with gold flashed contacts. Special protective treatments.
Please consult our Customer Care Centre.

Limit switches

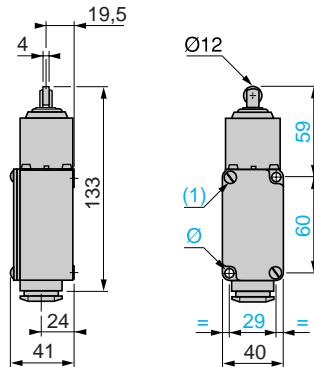
OsiSense XC Special

For very severe applications, type XC2J
Complete switches, fixed body,
1 cable entry incorporating cable gland

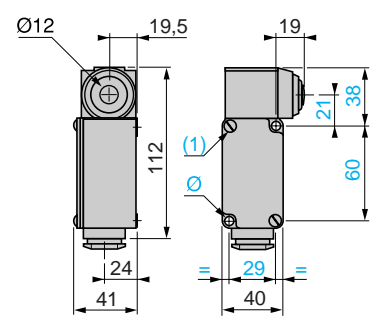
ZC2JC1 + ZC2JE61



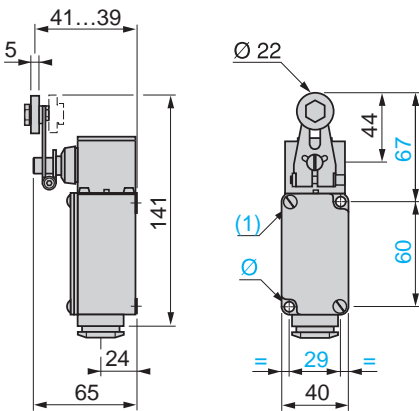
ZC2JC1 + ZC2JE62



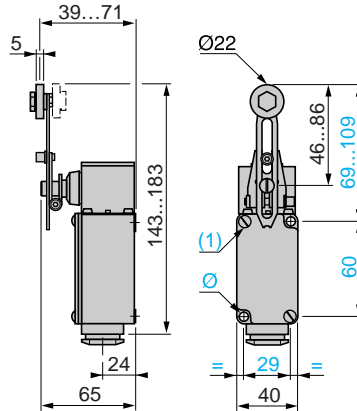
ZC2JC1 + ZC2JE63



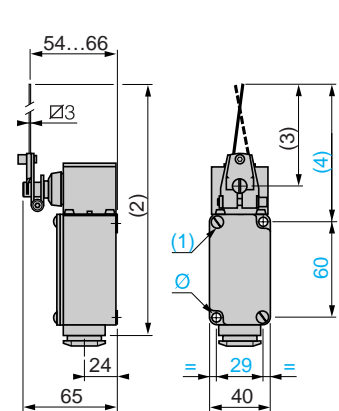
ZC2JC1 + ZC2JE0● + ZC2JY11



ZC2JC1 + ZC2JE0● + ZC2JY31



ZC2JC1 + ZC2JE0● + ZC2JY51



(1) Fixing from the rear: by 2 M5 screws.
Depth of thread on switch: 10 mm.

(2) 222 max.

(3) 125 max.

(4) 148 max.

Ø: Fixing from the front via 2 holes Ø 5.5.

Cable gland incorporated (all XC2JC models).

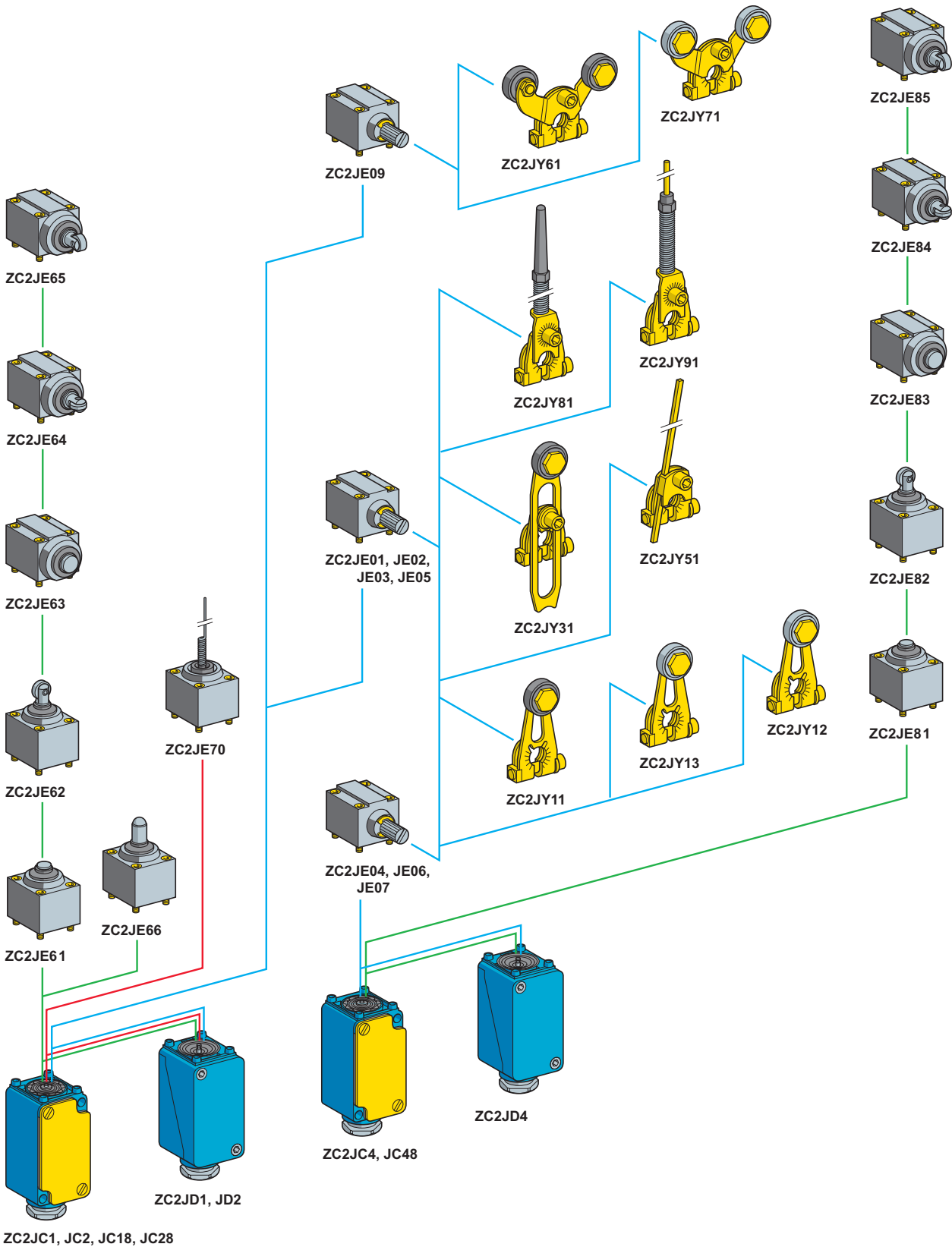
Limit switches

OsiSense XC Special

For very severe applications, type XC2J

Fixed or plug-in body

Variable composition



- Plunger head
- Rotary head
- Multi-directional head

1

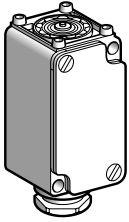
Limit switches

OsiSense XC Special

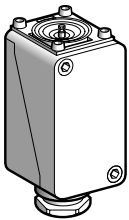
For very severe applications, type XC2J

Fixed or plug-in body

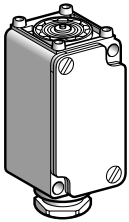
Adaptable sub-assemblies



ZC2JC●



ZC2JD●



ZC2JC8●

Bodies with contacts for plunger or rotary head

Type	With contact block	Scheme	Reference	Weight kg
Fixed bodies (see operation page 1/160)				
1 step	Single-pole 1 CO snap action (XCKZ01)		ZC2JC1	0.355
	Double-pole 2 CO simultaneous, snap action (XESP1021)		ZC2JC2	0.355
2 step	Double-pole 2 CO staggered, snap action (XESP1031)		ZC2JC4	0.355

Plug-in bodies

Plug-in bodies (see operation page 1/160)				
1 step	Single-pole CO snap action		ZC2JD1	0.380
	Double-pole 2 CO simultaneous, snap action		ZC2JD2	0.380
2 step	Double-pole 2 CO staggered, snap action		ZC2JD4	0.380

Bodies incorporating gold flashed contacts, for plunger or rotary head

Type	With contact block	Scheme	Reference	Weight kg
Fixed bodies (see operation page 1/160)				
1 step	Single-pole 1 CO snap action (XCKZ018)		ZC2JC18	0.355
	Double-pole 2 CO simultaneous, snap action (XESP1028)		ZC2JC28	0.360
2 step	Double-pole 2 CO staggered, snap action (XESP1038)		ZC2JC48	0.360

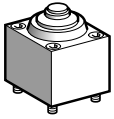
Limit switches

OsiSense XC Special

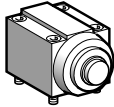
For very severe applications, type XC2J

Fixed or plug-in body

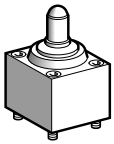
Adaptable sub-assemblies



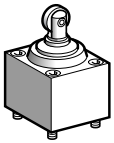
ZC2JE1



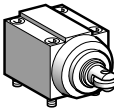
ZC2JE3



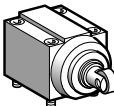
ZC2JE66



ZC2JE2



ZC2JE4



ZC2JE5

Plunger heads

Type of operator	Compatible bodies	Maximum actuation speed	Reference	Weight kg
For actuation on end				
End plunger metal	ZC2J●1 ZC2J●2	0.5 m/s	ZC2JE61	0.195
	ZC2J●4	0.5 m/s	ZC2JE81	0.195
	ZC2J●1 ZC2J●2	0.5 m/s	ZC2JE63	0.240
Side plunger metal	ZC2J●4	0.5 m/s	ZC2JE83	0.240
	For actuation by 30° cam			
End ball bearing plunger	ZC2J●1 ZC2J●2	0.1 m/s	ZC2JE66	0.205
End roller plunger steel	ZC2J●1 ZC2J●2	1 m/s	ZC2JE62	0.200
	ZC2J●4	1 m/s	ZC2JE82	0.200
Side plunger with horizontal roller steel	ZC2J●1 ZC2J●2	0.6 m/s	ZC2JE64	0.245
	ZC2J●4	0.6 m/s	ZC2JE84	0.245
Side plunger with vertical roller steel	ZC2J●1 ZC2J●2	0.6 m/s	ZC2JE65	0.245
	ZC2J●4	0.6 m/s	ZC2JE85	0.245

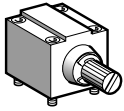
Limit switches

OsiSense XC Special

For very severe applications, type XC2J

Fixed or plug-in body

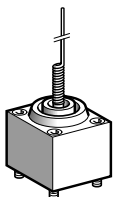
Adaptable sub-assemblies



ZC2JE01

Rotary heads (without operating lever)

Type	Compatible bodies	Maximum actuation speed	Reference	Weight kg
Spring return (see operation page 1/160)				
Actuation from left AND right	ZC2J●1	1.5 m/s	ZC2JE01	0.210
	ZC2J●2			
	ZC2J●4	1.5 m/s	ZC2JE04	0.210
Actuation from left	ZC2J●1	1.5 m/s	ZC2JE02	0.210
	ZC2J●2			
	ZC2J●4	1.5 m/s	ZC2JE06	0.210
Actuation from right	ZC2J●1	1.5 m/s	ZC2JE03	0.210
	ZC2J●2			
	ZC2J●4	1.5 m/s	ZC2JE07	0.210
Actuation from left OR right (see page 1/136)	ZC2J●1	1.5 m/s	ZC2JE05	0.210
	ZC2J●2			
Stay put (see page 1/136)				
Actuation from left AND right	ZC2J●1 ZC2J●2	1.5 m/s	ZC2JE09	0.210



ZC2JE70

Multi-directional head (with operator)

Type of operator	Compatible bodies	Maximum actuation speed	Reference	Weight kg
For actuation by any moving part (see operation page 1/160)				
"Cat's whisker"	ZC2J●1 ZC2J●2	1 m/s in any direction	ZC2JE70	0.190

Limit switches

OsiSense XC Special

For very severe applications, type XC2J

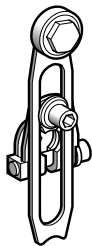
Fixed or plug-in body

Adaptable sub-assemblies

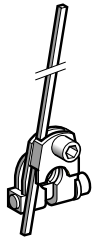
1



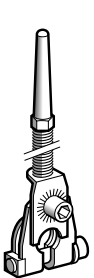
ZC2JY1



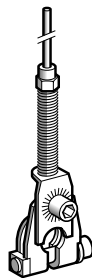
ZC2JY31



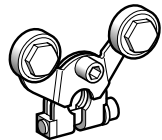
ZC2JY51



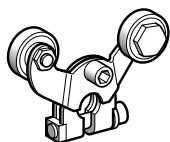
ZC2JY81



ZC2JY91



ZC2JY71



ZC2JY61

Operating levers for rotary heads

Description	Reference	Weight kg
For actuation by 30° cam		
Roller lever (1)	Thermoplastic	ZC2JY11 0.030
	Steel	ZC2JY13 0.040
	Steel, ball bearing mounted	ZC2JY12 0.040
Variable length roller lever (1)	Thermoplastic	ZC2JY31 0.045

For actuation by any moving part

Rigid rod lever	Steel \varnothing 3 mm, L = 125 mm (1)	ZC2JY51 0.035
Spring lever (1)		ZC2JY81 0.040
Spring-rod lever (1)		ZC2JY91 0.040

For actuation by specific cam (only for operation with head ZC2 JE09, see page 1/190)

Forked arm with rollers thermoplastic (1)	1 track	ZC2JY71 0.055
	2 track	ZC2JY61 0.055

(1) Adjustable throughout 360°

Other versions

Other operating levers for rotary heads.
Please consult our Customer Care Centre.

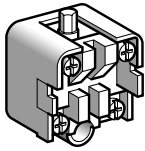
Limit switches

OsiSense XC Special

For very severe applications, type XC2J

Fixed or plug-in body

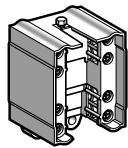
Adaptable sub-assemblies



XCKZ01

Contact blocks

Type of contact	Scheme	For body	Reference	Weight kg
Single-pole 1 CO snap action		ZC2JC1	XCKZ01	0.050
Double-pole 2 CO simultaneous, snap action		ZC2JC2	XESP1021	0.045
Double-pole 2 CO staggered, snap action		ZC2JC4	XESP1031	0.045



XESP1021

Contact blocks with gold flashed contacts

Type of contact	Scheme	For body	Reference	Weight kg
Single-pole 1 CO snap action		ZC2JC18	XCKZ018	0.050
Double-pole 2 CO simultaneous, snap action		ZC2JC28	XESP1028	0.055
Double-pole 2 CO staggered, snap action		ZC2JC48	XESP1038	0.055

Limit switches

OsiSense XC Special

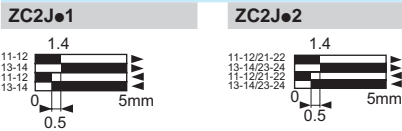
For very severe applications, type XC2J

Fixed or plug-in body

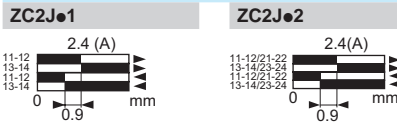
Adaptable sub-assemblies

Operation (function diagrams)

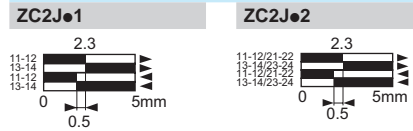
Heads ZC2JE61, ZC2JE66 with body



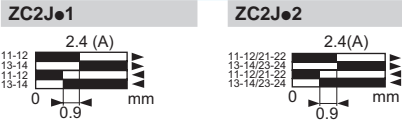
Head ZC2JE62 with body



Head ZC2JE63 with body



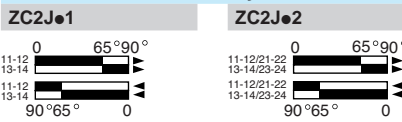
Heads ZC2JE64, ZC2JE65 with body



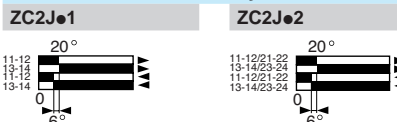
Heads ZC2JE01, ZC2JE02, ZC2JE03, ZC2JE05 with body



Head ZC2JE09 with body



Head ZC2JE70 with body



Contact operation

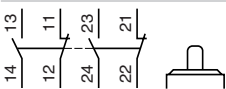
■ closed

□ open

(A) = cam displacement

Heads ZC2JE81, ZC2JE82 with body ZC2J•4

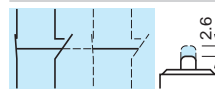
Unactuated



1st step

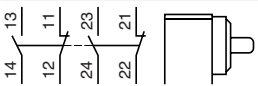


2nd step



Heads ZC2JE83, ZC2JE84, ZC2JE85 with body ZC2J•4

Unactuated



1st step

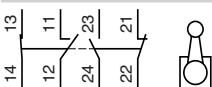


2nd step

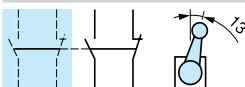


Heads ZC2JE04 with body ZC2J•4

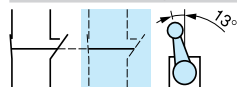
Unactuated



Actuated from left

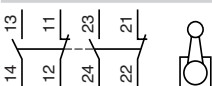


Actuated from right

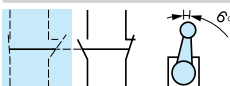


Heads ZC2JE06, ZC2JE07 with body ZC2J•4

Unactuated



1st step



2nd step



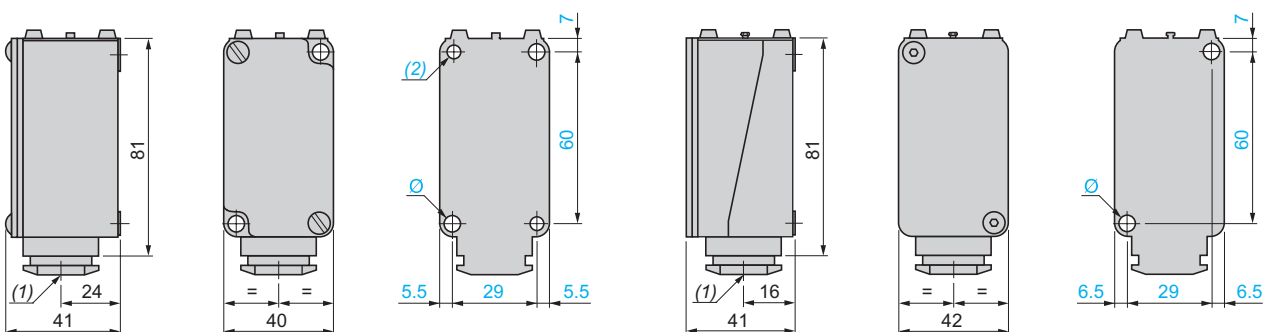
Dimensions

Fixed bodies

ZC2JC1, ZC2JC2, ZC2JC4

Plug-in bodies

ZC2JD1, ZC2JD2, ZC2JD4



(1) Incorporated cable gland

(2) Fixing from the rear by 2 M5 screws, depth of thread on switch: 10 mm

Ø: Fixing from the front via 2 holes Ø 5.5

(1) Incorporated cable gland

Ø: Fixing from the rear by 2 M6 screws

Fixing from the front via 2 holes Ø 5.5 (remove front part of switch for access)

Limit switches

OsiSense XC Special

For very severe applications, type XC2J

Fixed or plug-in body

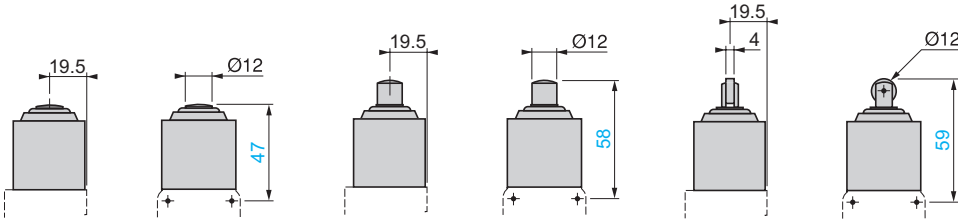
Adaptable sub-assemblies

Plunger heads

ZC2JE61, ZC2JE81

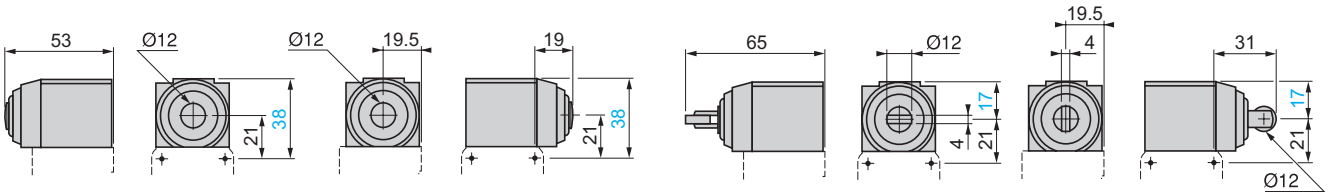
ZC2JE66

ZC2JE62, ZC2JE82



ZC2JE63, ZC2JE83 (2 position)

ZC2JE64, ZC2JE84, ZC2JE65, ZC2JE85 (2 position)

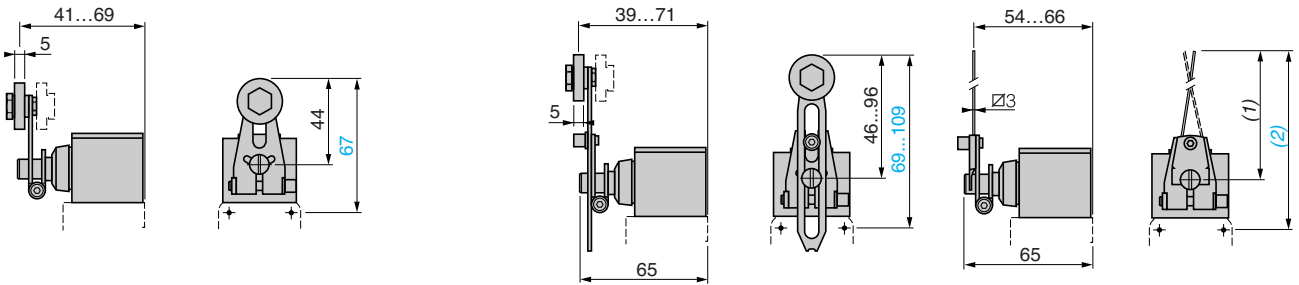


Rotary heads (ZC2JE01 to ZC2JE07) with operating lever

ZC2JY11, ZC2JY12, ZC2JY13

ZC2JY31

ZC2JY51

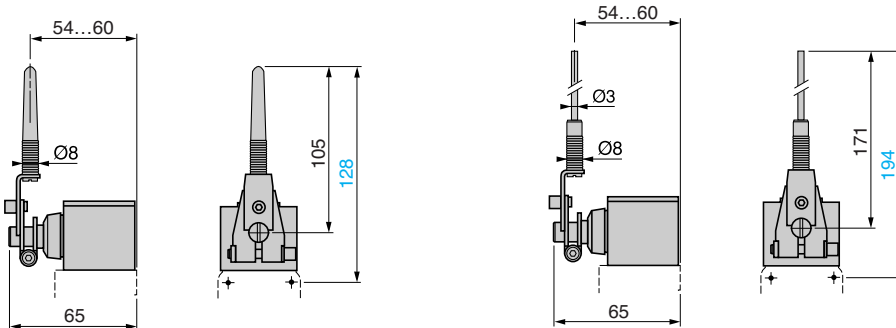


(1) 125 max.

(2) 148 max.

ZC2JY81

ZC2JY91



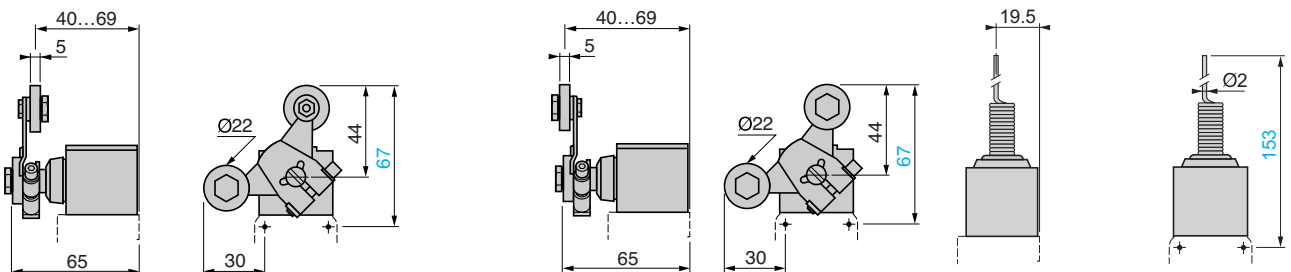
Rotary heads (ZC2JE09) with operating lever

ZC2JY61

ZC2JY71

Multi-directional heads

ZC2JE70

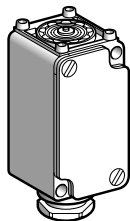


Limit switches

OsiSense XC Special

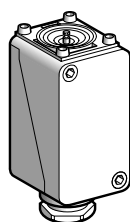
For very severe applications, type XC2J

Fixed or plug-in body, adaptable sub-assemblies for low temperature applications (- 40°C)



ZC2JC●6

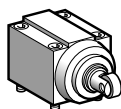
Bodies with contacts for plunger or rotary head				
Type	With contact block	Scheme	Reference	Weight kg
Fixed bodies				
1 step	Single-pole 1 CO snap action (XCK Z01)		ZC2JC16	0.355
	Double-pole 2 CO simultaneous, snap action (XES P1021)		ZC2JC26	0.355
2 step	Double-pole 2 CO staggered, snap action (XES P1031)		ZC2JC46	0.355



ZC2JD●6

Plug-in bodies				
Type	With contact block	Scheme	Reference	Weight kg
1 step	Single-pole CO snap action		ZC2JD16	0.380
	Double-pole 2 CO simultaneous, snap action		ZC2JD26	0.380
2 step	Double-pole 2 CO staggered, snap action		ZC2JD46	0.380

Plunger heads				
Type of operator	Compatible bodies	Maximum actuation speed	Reference	Weight kg
For actuation on end				
End plunger metal	ZC2J●16	0.5 m/s	ZC2JE616	0.195
	ZC2J●26			
	ZC2J●46	0.5 m/s	ZC2JE816	0.195
Side plunger metal	ZC2J●16	0.5 m/s	ZC2JE636	0.240
	ZC2J●26			
	ZC2J●46	0.5 m/s	ZC2JE836	0.240
For actuation by 30° cam				
End ball bearing plunger	ZC2J●16	0.1 m/s	ZC2JE666	0.205
	ZC2J●26			
End roller plunger steel	ZC2J●16	1 m/s	ZC2JE626	0.200
	ZC2J●26			
	ZC2J●46	1 m/s	ZC2JE826	0.200
Side plunger with horizontal roller steel	ZC2J●16	0.6 m/s	ZC2JE646	0.245
	ZC2J●26			
Side plunger with vertical roller steel	ZC2J●16	0.6 m/s	ZC2JE656	0.245
	ZC2J●26			
	ZC2J●46	0.6 m/s	ZC2JE856	0.245



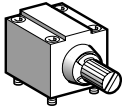
ZC2JE●56

Limit switches

OsiSense XC Special

For very severe applications, type XC2J

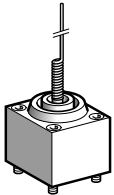
Fixed or plug-in body, adaptable sub-assemblies for low temperature applications (- 40°C)



ZC2JE06

Rotary heads (without operating lever)

Type	Compatible bodies	Maximum actuation speed	Reference	Weight kg
Spring return				
Actuation from left AND right	ZC2J●16	1.5 m/s	ZC2JE016	0.210
	ZC2J●26			
Actuation from left	ZC2J●16	1.5 m/s	ZC2JE026	0.210
	ZC2J●46			
Actuation from right	ZC2J●16	1.5 m/s	ZC2JE036	0.210
	ZC2J●26			
Actuation from left OR right (see page 1/190)	ZC2J●16	1.5 m/s	ZC2JE056	0.210
	ZC2J●26			
Stay put (see page 1/190)				
Actuation from left AND right	ZC2J●16 ZC2J●26	1.5 m/s	ZC2JE096	0.210



ZC2JE706

Multi-directional head (with operator)

Type of operator	Compatible bodies	Maximum actuation speed	Reference	Weight kg
For actuation by any moving part				
"Cat's whisker"	ZC2J●16 ZC2J●26	1 m/s in any direction	ZC2JE706	0.190

Limit switches

OsiSense XC Special

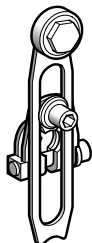
For very severe applications, type XC2J

Fixed or plug-in body, adaptable sub-assemblies for low temperature applications (- 40°C)

1



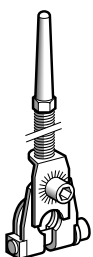
ZC2JY1



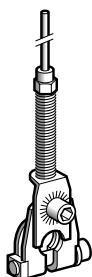
ZC2JY31



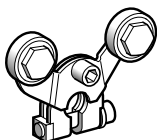
ZC2JY51



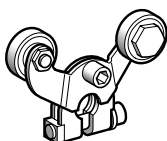
ZC2JY81



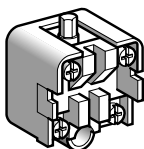
ZC2JY91



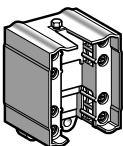
ZC2JY71



ZC2JY61



XCKZ01



XESP10

Operating levers for rotary heads

Description	Reference	Weight kg
For actuation by 30° cam		
Roller lever (1)	Thermoplastic	ZC2JY11 0.030
	Steel	ZC2JY13 0.040
	Steel, ball bearing mounted	ZC2JY12 0.040
Variable length roller lever (1)	Thermoplastic	ZC2JY31 0.045

For actuation by any moving part

Rigid rod lever	Steel \varnothing 3 mm, L = 125 mm (1)	ZC2JY51 0.035
Spring lever (1)		ZC2JY81 0.040
Spring-rod lever (1)		ZC2JY91 0.040

For actuation by specific cam (only for operation with head ZC2 JE096, see page 1/190)

Forked arm with rollers thermoplastic (1)	1 track	ZC2JY71 0.055
	2 track	ZC2JY61 0.055

Contact blocks

Type of contact	Scheme	For body	Reference	Weight kg
Single-pole 1 CO snap action		ZC2JC16	XCKZ01	0.050
Double-pole 2 CO simultaneous, snap action		ZC2JC26	XESP1021	0.045
Double-pole 2 CO staggered, snap action		ZC2JC46	XESP1031	0.045

(1) Adjustable throughout 360°

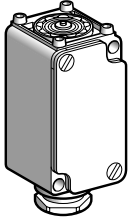
Other versions

Other operating levers for rotary heads. Please consult our Customer Care Centre.

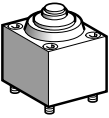
Limit switches

OsiSense XC Special

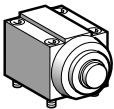
For very severe applications, type XC2J
Fixed body, adaptable sub-assemblies for high
temperature applications (+ 120°C)



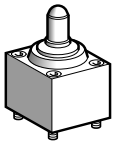
ZC2JC•5



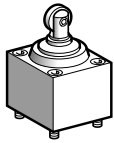
ZC2JE•15



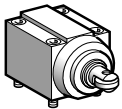
ZC2JE•35



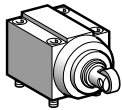
ZC2JE665



ZC2JE•25



ZC2JE•45



ZC2JE•55

Bodies with contacts for plunger or rotary head

Type	With contact block	Scheme	Reference	Weight kg
Fixed bodies				
1 step	Single-pole 1 CO snap action (XCK Z015)		ZC2JC15	0.355
	Double-pole 2 CO simultaneous, snap action (XES P10215)		ZC2JC25	0.355
2 step	Double-pole 2 CO staggered, snap action (XES P10315)		ZC2JC45	0.355

Plunger heads

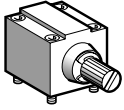
Type of operator	Compatible bodies	Maximum actuation speed	Reference	Weight kg
For actuation on end				
End plunger metal	ZC2JC15 ZC2JC25	0.5 m/s	ZC2JE615	0.195
	ZC2JC45	0.5 m/s	ZC2JE815	0.195
Side plunger metal	ZC2JC15 ZC2JC25	0.5 m/s	ZC2JE635	0.240
	ZC2JC45	0.5 m/s	ZC2JE835	0.240
	For actuation by 30° cam			
End ball bearing plunger	ZC2JC15 ZC2JC25	0.1 m/s	ZC2JE665	0.205
End roller plunger steel	ZC2JC15 ZC2JC25	1 m/s	ZC2JE625	0.200
	ZC2JC45	1 m/s	ZC2JE825	0.200
Side plunger with horizontal roller steel	ZC2JC15 ZC2JC25	0.6 m/s	ZC2JE645	0.245
	ZC2JC45	0.6 m/s	ZC2JE845	0.245
Side plunger with vertical roller steel	ZC2JC15 ZC2JC25	0.6 m/s	ZC2JE655	0.245
	ZC2JC45	0.6 m/s	ZC2JE855	0.245

Limit switches

OsiSense XC Special

For very severe applications, type XC2J

Fixed body, adaptable sub-assemblies for high temperature applications (+ 120°C)



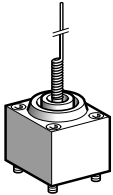
ZC2JE05

Rotary heads (without operating lever)

Type	Compatible bodies	Maximum actuation speed	Reference	Weight kg
Spring return				
Actuation from left AND right	ZC2JC15 ZC2JC25	1.5 m/s	ZC2JE015	0.210
	ZC2JC45	1.5 m/s	ZC2JE045	0.210
Actuation from left	ZC2JC15 ZC2JC25	1.5 m/s	ZC2JE025	0.210
	ZC2JC45	1.5 m/s	ZC2JE065	0.210
Actuation from right	ZC2JC15 ZC2JC25	1.5 m/s	ZC2JE035	0.210
	ZC2JC45	1.5 m/s	ZC2JE075	0.210

Stay put (see page 1/190)

Actuation from left AND right	ZC2JC15 ZC2JC25	1.5 m/s	ZC2JE095	0.210
-------------------------------	--------------------	---------	----------	-------



ZC2JE705

Multi-directional head (with operator)

Type of operator	Compatible bodies	Maximum actuation speed	Reference	Weight kg
For actuation by any moving part				
"Cat's whisker"	ZC2JC15 ZC2JC25	1 m/s in any direction	ZC2JE705	0.190

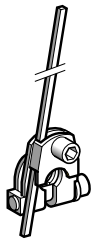
Limit switches

OsiSense XC Special

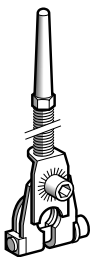
For very severe applications, type XC2J
Fixed body, adaptable sub-assemblies for high temperature applications (+ 120°C)



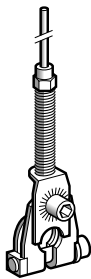
ZC2JY1●



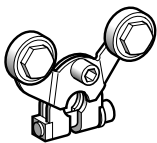
ZC2JY51



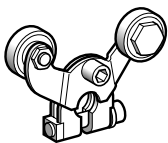
ZC2JY815



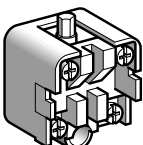
ZC2JY915



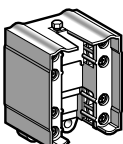
ZC2JY715



ZC2JY615



XCKZ015



XESP10●15

Operating levers for rotary heads

Description	Reference	Weight kg
For actuation by 30° cam		
Roller lever (1)	Thermoplastic	ZC2JY115 0.030
	Steel	ZC2JY13 0.040
	Steel, ball bearing mounted	ZC2JY12 0.040
Offset roller lever (1)	Thermoplastic	ZC2JY215 0.035
Variable length roller lever (1)	Thermoplastic	ZC2JY315 0.035
Variable length offset roller lever (1)	Thermoplastic	ZC2JY415 0.040

For actuation by any moving part

Rigid rod lever	Steel \varnothing 3 mm, L = 125 mm (1)	ZC2JY51 0.035
Spring lever (1)		ZC2JY815 0.040
Spring-rod lever (1)		ZC2JY915 0.040

For actuation by specific cam (only for operation with head ZC2JE095, see page 1/190)

Forked arm with rollers thermoplastic (1)	1 track	ZC2JY715 0.055
	2 track	ZC2JY615 0.055

Contact blocks

Type of contact	Scheme	For body	Reference	Weight kg
Single-pole 1 CO snap action		ZC2JC15	XCKZ015	0.050
Double-pole 2 CO simultaneous, snap action		ZC2JC25	XESP10215	0.045
Double-pole 2 CO staggered, snap action		ZC2JC45	XESP10315	0.045

(1) Adjustable throughout 360°

Other versions

Other operating levers for rotary heads.
Please consult our Customer Care Centre.