

Analogue TMR 48

→ TMR 48



- Multi-function or mono-function
- Multi-range from 0.02 s to 300 h
- Multi-voltage 12 to 240 VDC / 24 to 240 V AC
- Time setting displayed on dial
- 2 changeover relays 5 A / 250 VAC
- Display of power and output states by 2 LEDs
- Housing 48 x 48 mm



Specifications

Type	Functions	Relay outputs	Max. breaking current	Supply voltage	Connection	Code
TMR 48 U	A, B, C, W, G, Ac, Bw	2 timed changeover	5 A / 250 VAC	12 → 240 VDC 24 → 240 VAC	Plug-in 11 way	88 886 016
TMR 48 A	A	2 timed changeover	5 A / 250 VAC	12 → 240 VDC 24 → 240 VAC	Plug-in 8 way	88 886 106
TMR 48 X	A1, A2, H1, H2, Q1, Q2, D-Di	2 changeover or 1 timed and 1 instantaneous	5 A / 250 VAC	12 → 240 VDC 24 → 240 VAC	Plug-in 8 way	88 886 116
TMR 48 L	L, Li, G, Gi	2 timed changeover	5 A / 250 VAC	12 → 240 VDC 24 → 240 VAC	Plug-in 11 way	88 886 516

Accessories

	Code
11-pin connector base	25 622 080
8-pin connector base	25 622 130
Spring clips (packet of 2)	79 237 740
Black front face. For grey and other colours	please consult us

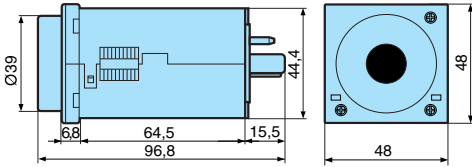
General characteristics

Supply voltage Un	12 → 240 VDC 24 → 240 V AC
Operating range	± 10 % DC supply - 15 % / + 10 % AC supply
Frequency	50 / 60 Hz
Power consumption	4.8 VA / 230 VAC 2.5 VA / 110 VAC 1.1 VA / 24 VAC 0.5 W / 24 VDC 0.8 W / 12 VDC
Timing ranges (14 available options)	0,02 → 1,2 s 0,2 → 12 min. 0,2 → 12 h 0,05 → 3 s 0,5 → 30 min. 0,5 → 30 h 0,2 → 12 s 2 → 120 min. 2 → 120 h 0,5 → 30 s 5 → 300 min. 5 → 300 h 2 → 120 s 5 → 300 s
Repetition accuracy	± 0.5 % of full scale at 25°C (typical with constant parameters)
Temperature drift according to CEI/EN 61812	± 0.05 % of full scale
Display accuracy	± 5 % of full scale at 25°C
Minimum pulse duration START	25 ms
Minimum pulse duration GATE	60 ms
Minimum pulse duration RESET	60 ms
Start-up delay after power cut (START linked)	50 ms
Output specification	
Nominal rating	2 x 5 A
Nominal insulation voltage	250 VAC
Rated power (resistive load)	2000 VA
Minimum current	10 mA
Electrical life at I max. 250 V AC resistive (number of operations)	10 ⁵
Mechanical life (operations)	30 x 10 ⁶
Function and use	
Display of output state by 2 LEDs	Green : power ON, flashing during timing Yellow : ON output ON, OFF output OFF
Operating temperature range (°C)	-20 → +55
Storage temperature range (°C)	-40 → +70
Breakdown voltage	2 KV
Protection class (IEC 60529) - Panel-mounted	IP 50
Protection class (IEC 60529) - Casing	IP 40
Material housing	self-extinguishing
Weight (g)	140

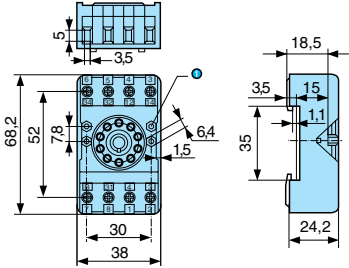
To order, see page 6

Dimensions

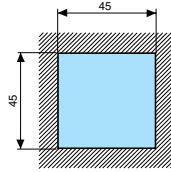
TMR 48 U / A / X / L



Connector base - 25 622 080 - 25 622 130

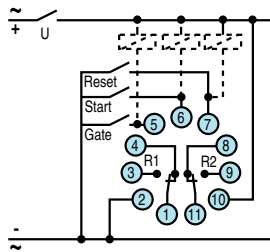


Panel cut-out

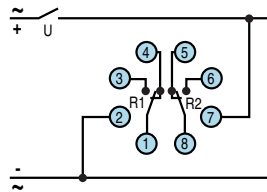


Connections

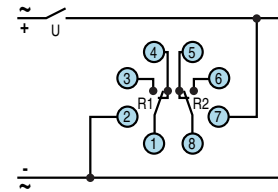
TMR 48 U



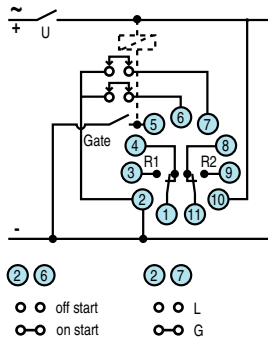
TMR 48 A



TMR 48 X

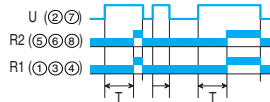


TMR 48 L

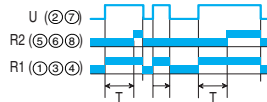


Curves

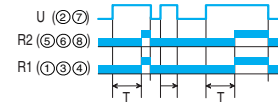
Function A (TMR 48 A) Delay on energisation



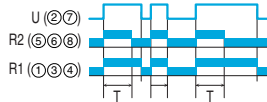
Function A1 Delay on energisation



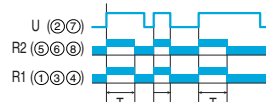
Function A2 Delay on energisation



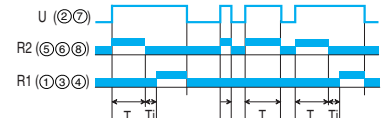
Function H1 Timing on energisation



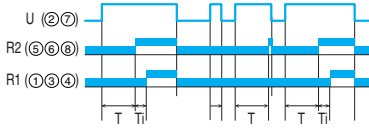
Function H2 Timing on energisation



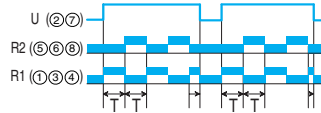
Function Q1 Star-delta



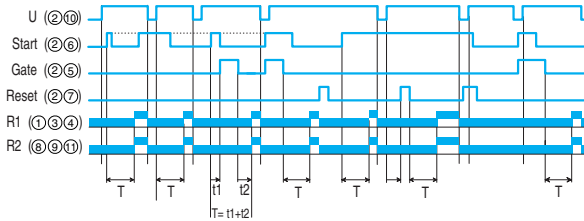
Function Q2
Star-delta 2



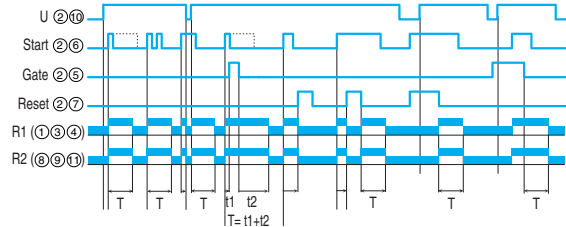
Function D-Di
Cyclic timing : symetric recycler



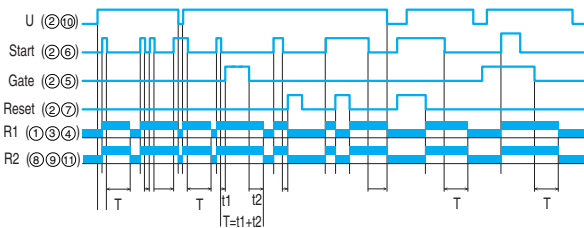
Function A (TMR 48 U)
Delay on energisation



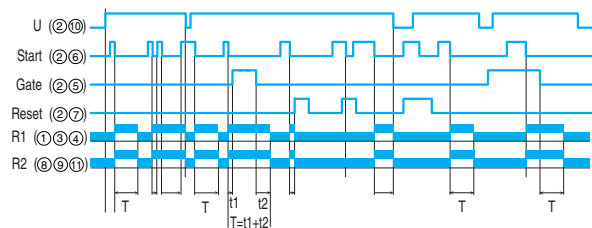
Function B
Timing on impulse



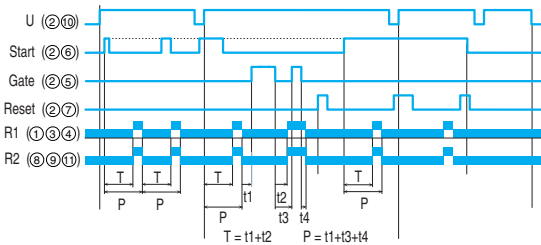
Function C
Timing after impulse- Delay off with constant supply



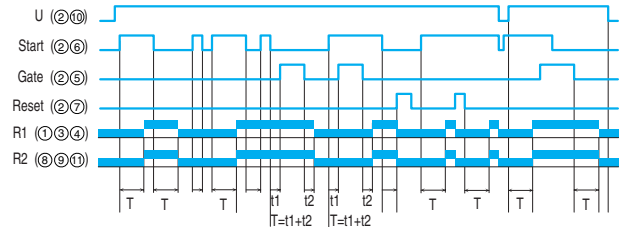
Function W
Timing after impulse on control contact



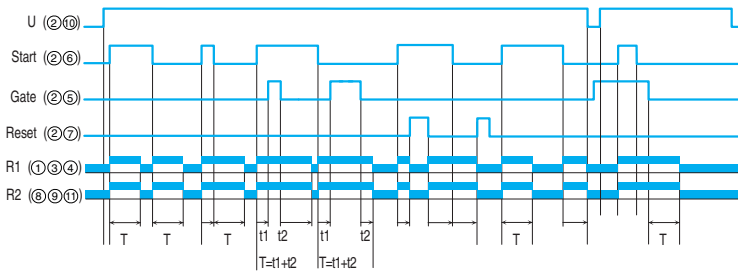
Function G
Cyclic function



Function Ac
Timing after closing and opening of control contact



Function Bw
Pulse output (adjustable)



Function L/Li - G/Gi
Cyclic timing : asymmetrical recycler

