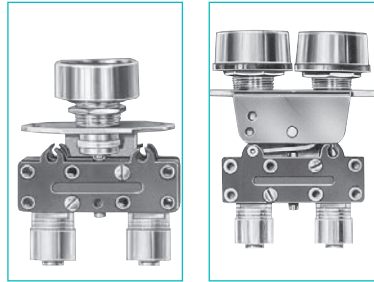


Boutons poussoirs et leviers pneumatiques Ø 12 mm



Fonctions	Couleur actionneur	Couleur vanne	Bouton poussoir rond	Bouton poussoir double rond
Version	NF	noir	81 735 511	—
		rouge	81 735 512	—
		noir/rouge	—	81 733 511
NO	noir	grise	81 735 011	—
		rouge	—	—
		noir/rouge	—	—

Symbole

NF



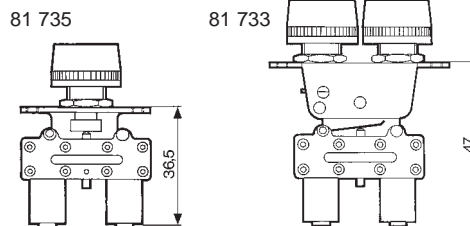
NO



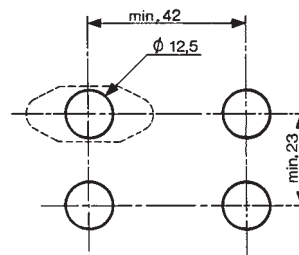
Caractéristiques

Pression d'utilisation	bar	2 → 8	2 → 8
Ø de passage	mm	2,7	2,7
Débit à 6 bars	NI/mn.	200	200
Vannes	NF : noire NO : grise	●	●
Forces de commande (suivant actionneur)	N	8 → 18	8 → 18
Course utile	mm	1	1
Fluide air sec ou huilé		●	●
Raccords instantanés pour tubes semi-rigide (NFE 49100)	mm	Ø 4	Ø 4
Température d'utilisation	°C	-5 → +50	-5 → +50
Endurance mécanique	manceuvres	1,5.10 ⁶	1,5.10 ⁶
Masse	g	35	40

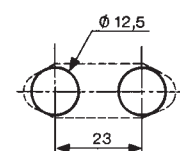
Encombrements

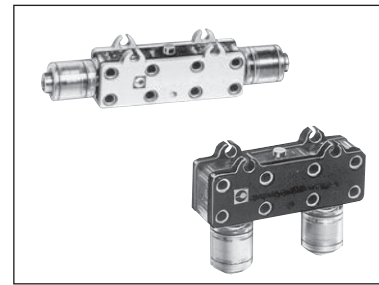
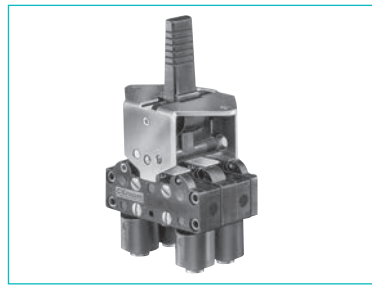
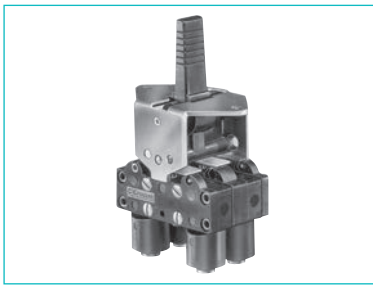


A canon fileté



2 canons filetés





Levier 3 positions
retour manuel

81 716 511
81 716 512

—
—
—

Levier 3 positions
retour automatique

81 715 511
81 715 512

—
—
—

Sortie latérale

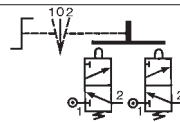
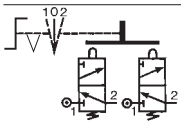
81 280 510
—

81 280 010
—

Sortie inférieure

81 281 510
—

81 281 010
—



2 → 8
2,7
200

•
•
8 → 18
1

•
Ø 4
-5 → +50
1,5.10⁶
65

2 → 8
2,7
200

•
•
8 → 18
1

•
Ø 4
-5 → +50
1,5.10⁶
65

2 → 8
2,7
200

—
—
1

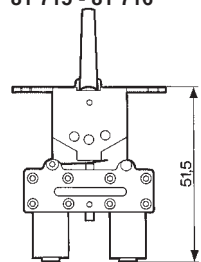
—
Ø 4
-5 → +50
1,5.10⁶
14

2 → 8
2,7
200

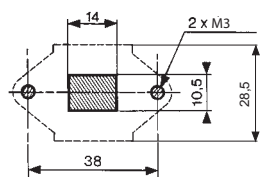
—
—
1

—
Ø 4
-5 → +50
1,5.10⁶
14

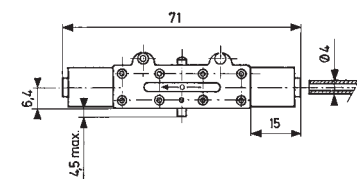
81 715 - 81 716



Levier carré



81 280 010 - 81 280 510



81 281 010 - 81 281 510

